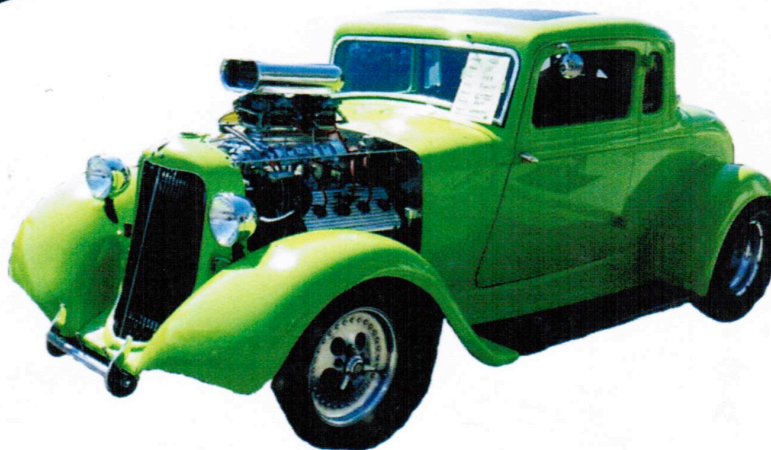


Show n'Shine



Note: ECSCC will park 1/2 block north of where we were last year. In front of the old Service Station across from the Bank of Montreal.

Tofield Lions Club 17th Heritage Classic Car Show



Registration
\$20.00

9:30 am - 11:30
Community Hall
Main Street
(Public Free)

The Lions Club will have hot food and refreshments available all day.

The Community Hall will also be open for desserts.

Pancake Breakfast

at Seniors
Drop-In Centre
8:30—11am



Aug. 5, 2019

**Held on Main Street in Tofield,
Alberta**

12:00PM to 3PM

- **New Cars: Vintage, Classic & Collectors**
 - **Cars: Muscle, Rods and Modified**
 - **Trucks: Vintage, Classic, Collectors**
- **Cars & Trucks: Proud and Newer (1995 – 2019)**
 - **Long Distance Travel Trophy**
 - **Convertibles, and works in progress**
 - **Thanks to all sponsors**

After the Show & Shine we're invited to Phil's BBQ at around 3 PM.
Bring your own meat, seat and drinks.
Sandi is providing the rest. **Desserts appreciated!**

Directions to Phil's Farm:

Turn south off Hwy 14 onto RR 192 (Davison Road) and travel 7 km south on this gravel road. Turn right/west and enter Phil's Farm signed with a Big Rig Orange Allison Tractor Wheel at the entrance. Phil's grain elevator is the only grain elevator in the area.

For roads less gravelled, turn south off Hwy 14 onto Hwy 834 and drive south along this paved road to 502 which is gravel. 502 takes you west to RR 192 (Davison Road) within sight of Phil's Farm. Taking 500 also works.

Tofield is 25 min east of Edmonton on Hwy. 14